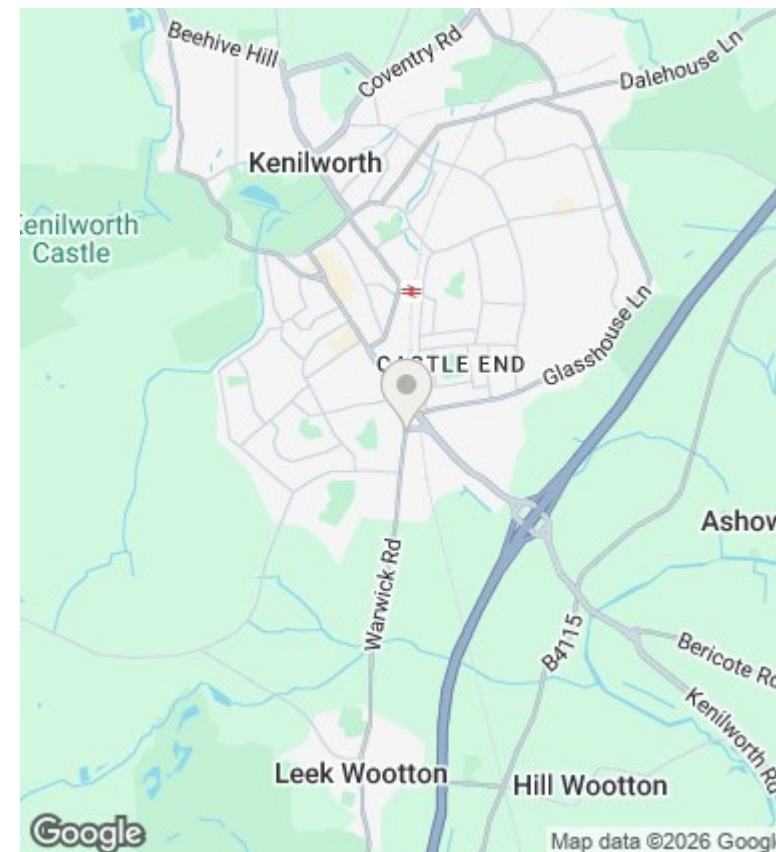
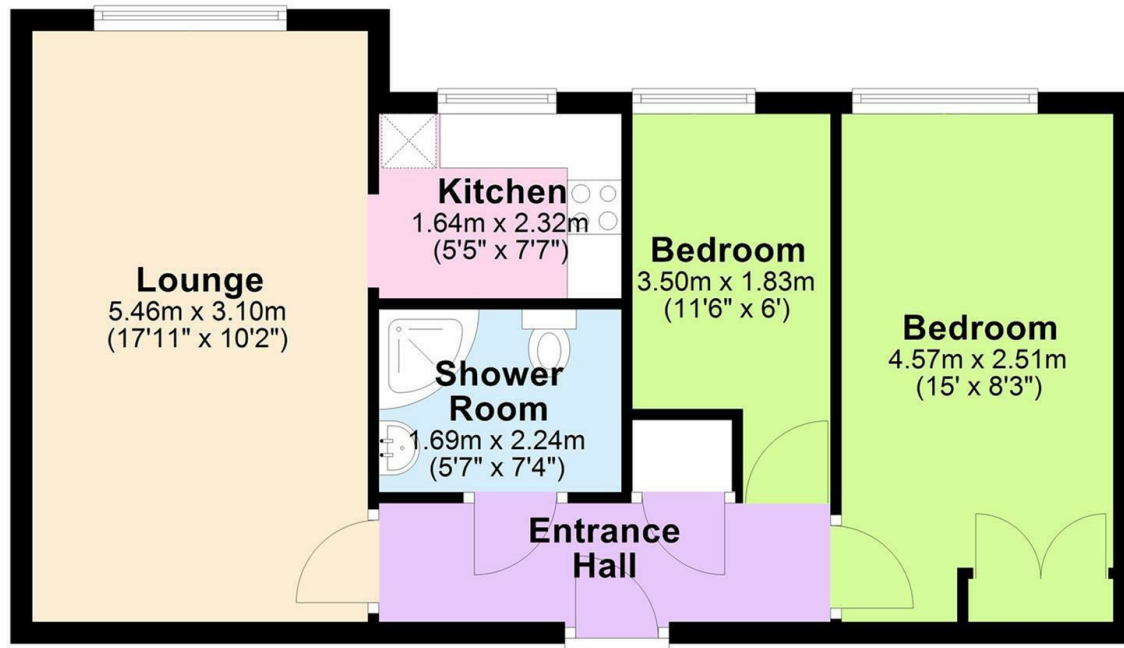




28 Oaklands Court Warwick Road, Kenilworth, CV8 1FD

Asking Price £100,000

- Two Bedroom Retirement Apartment
- Fitted Kitchen With Appliances
- EPC Rating - C
- No Onward Chain
- On Site Manager
- Modern Shower Room
- Communal Gardens & Parking
- Communal Conservatory, Guest Suite & Laundry
- Double Bedroom With Fitted Wardrobes
- Electric Heating & Double Glazing



Directions

19 The Square, Kenilworth, Warwickshire, CV8 1EF
01926 857244

Viewings

Viewings by arrangement only. Call 01926 857244 to make an appointment.

Council Tax Band

C

EPC Rating:

C

Energy Efficiency Rating		Current	Potential
<i>Very energy efficient - lower running costs</i>			
(92 plus)	A		
(81-91)	B		
(69-80)	C	78	80
(55-68)	D		
(39-54)	E		
(21-38)	F		
(1-20)	G		
<i>Not energy efficient - higher running costs</i>			
England & Wales		EU Directive 2002/91/EC	

sales@boothroyd.co.uk
www.boothroyd.co.uk