



Harger Mews, Kenilworth. CV8 1RH

£1,050 PCM

- Kenilworth Town Centre Apartment
- Gas Central Heating System
- Double Glazing Throughout
- Two Double Bedrooms
- Available part furnished 7th August 2026.
- Private Entrance & Hallway
- EPC Rating C - 73
- Allocated Parking Space
- Fitted Kitchen With Appliances
- Warwick District Council Tax Band B

Harger Mews, Kenilworth. CV8 1RH

Situated in the heart of Kenilworth this first floor apartment benefits its own entrance door and hallway. Located on the first floor the apartment has double glazing, gas central heating and a parking space adjacent to the property. You enter into a generous hallway with stairs rising to the first floor landing and on into the apartment. The central hallway has all doors off to the front sitting room with attractive bay window looking down the close. The kitchen has a built in oven , hob and extractor, washing machine and a fridge freezer. There are two double bedrooms and a bathroom. A generous size and available part furnished 7th August 2026.



Council Tax Band: B



HALLWAY

With dogleg staircase rising to the first floor landing.

LANDING

Access to loft void, airing cupboard and doors off to

LOUNGE

18'0" x 11'5"

Double glazed window and further bay window to the fore with curtains, double and single radiators, coving to ceiling, four seater dining table and chairs, lamp, TV stand, and bookcase.

FITTED KITCHEN

9'6" x 8'8"

Fitted with quality beech fronted wall and base units. The base units have a marble effect roll topped worksurface over with an inset stainless steel sink unit set beneath the double glazed window to the side. tiling to splashbacks, microwave, washing machine, upright fridge freezer and built in oven set beneath a four ring gas hob and extractor canopy. Ceiling downlighters.

BEDROOM ONE

12'8" x 8'2"

With a double bed, double mattress, bedside cabinet, mirror, double glazed window to the rear with a radiator beneath. Built in double wardrobe.

BEDROOM TWO

9'9" x 9'5"

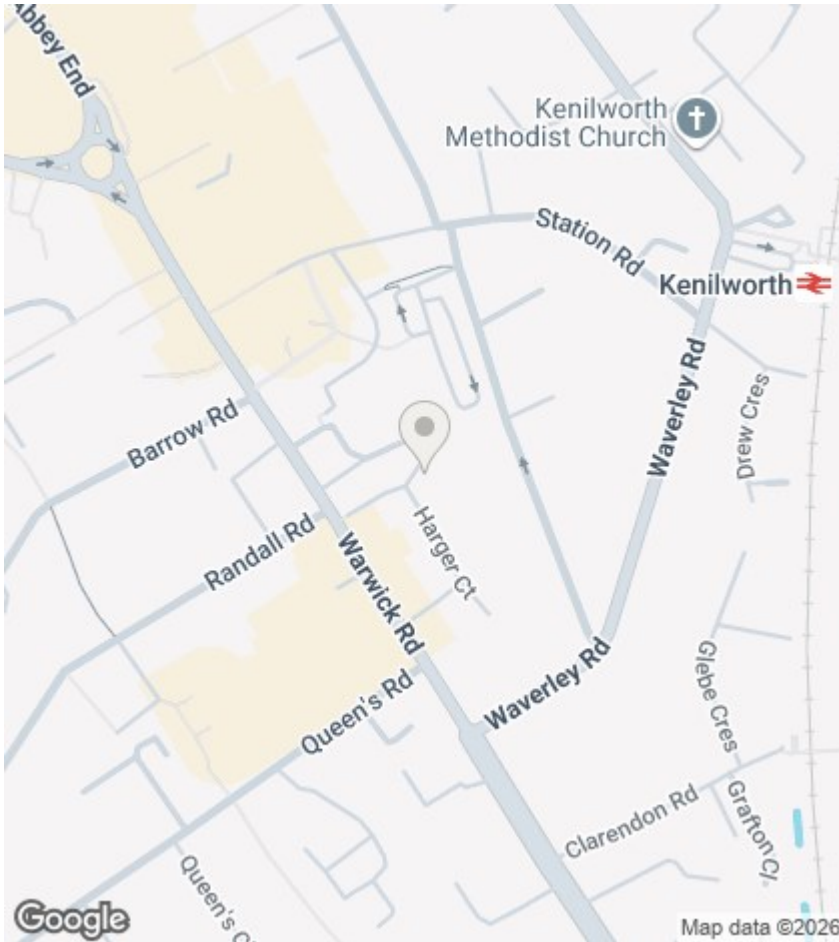
Double glazed window to the side with a radiator beneath and built in beech double wardrobe, bedside cabinet and a bookcase.

BATHROOM

Fitted with a white suite that comprises a panelled bath with mixer shower, pedestal wash hand basin and a close coupled wc. Tiling to splashbacks, radiator and medicine cabinet.

ALLOCATED PARKING

There is an allocated parking bay adjacent to the property.



Viewings

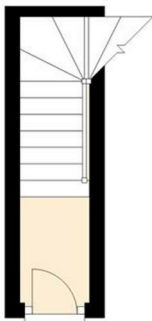
Viewings by arrangement only. Call 01926 857244 to make an appointment.

EPC Rating:

C

Energy Efficiency Rating		Current	Potential
Very energy efficient - lower running costs			
(92 plus) A			
(81-91) B			
(69-80) C		73	74
(55-68) D			
(39-54) E			
(21-38) F			
(1-20) G			
Not energy efficient - higher running costs			
England & Wales		EU Directive 2002/91/EC	

Ground Floor
Approx. 3.5 sq. metres



Approx. 65.3 sq. metres

