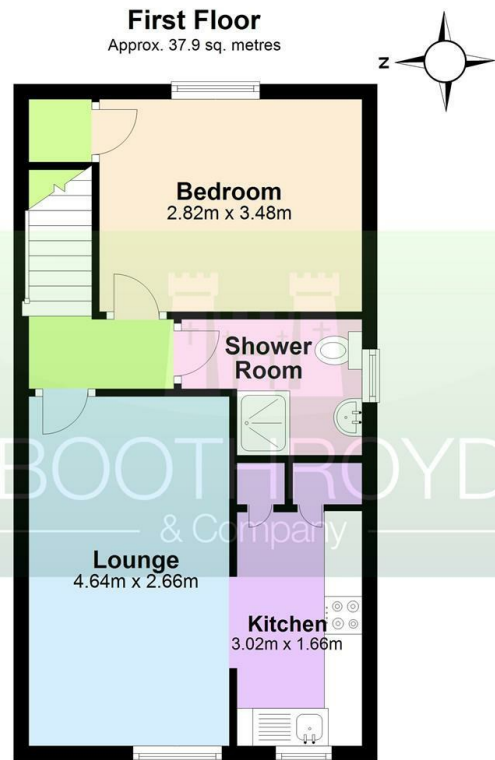




## 7 Drew Crescent, Kenilworth, Warwickshire, CV8 1RD

£875 Per Calendar Month

- Recently Renovated One Bedroom Masionette
- Parking For One Vehicle
- Modern Fitted Kitchen
- Available 18th March 2026
- Town Centre Location
- New Modern Electric Heating
- Re-Carpeted and Re-Decorated
- Close to Kenilworth Train Station
- EPC Rating D
- Private Rear Garden



Total area: approx. 37.9 sq. metres



## Directions

## Viewings

Viewings by arrangement only. Call 01926 857244 to make an appointment.

## Council Tax Band

B

## EPC Rating:

D

Energy Efficiency Rating		
	Current	Potential
Very energy efficient - lower running costs		
(92 plus) <b>A</b>		
(81-91) <b>B</b>		
(69-80) <b>C</b>		77
(55-68) <b>D</b>	60	
(39-54) <b>E</b>		
(21-38) <b>F</b>		
(1-20) <b>G</b>		
Not energy efficient - higher running costs		
England & Wales		EU Directive 2002/91/EC