



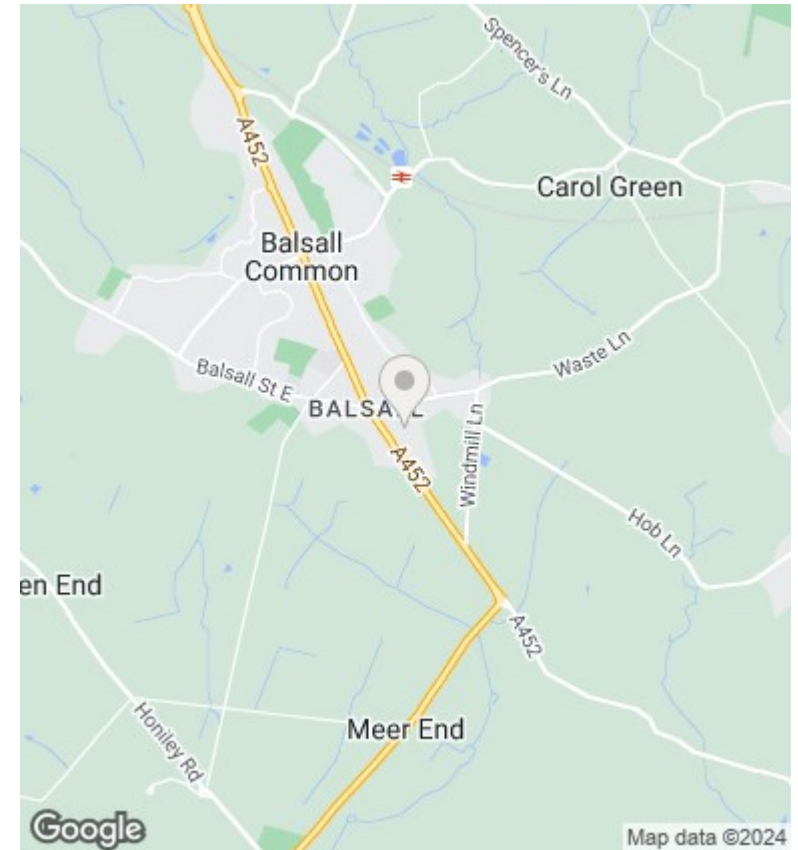
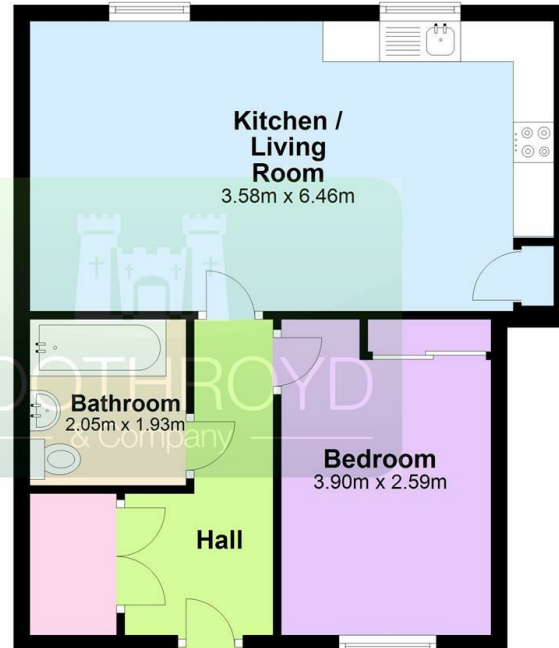
## 5 Drovers Close, Balsall Common, Coventry, CV7 7JB

£850 PCM

- Ground Floor One Bedroom Maisonette
- EPC Rating B
- Allocated Parking and Bike Store
- Available 13th March 2024
- Stunning Fully Integrated Kitchen
- Open Plan Lounge
- Gas Central Heating & Double Glazing
- One Bedroom with Fitted Wardrobe
- Attractive Bathroom with Shower
- Quality Flooring Throughout

### Ground Floor

Approx. 45.9 sq. metres



### Directions

### Viewings

Viewings by arrangement only. Call 01926 857244 to make an appointment.

### Council Tax Band

B

### EPC Rating:

B

Energy Efficiency Rating		
	Current	Potential
Very energy efficient - lower running costs		
(92 plus) <b>A</b>		
(81-91) <b>B</b>	82	82
(69-80) <b>C</b>		
(55-68) <b>D</b>		
(39-54) <b>E</b>		
(21-38) <b>F</b>		
(1-20) <b>G</b>		
Not energy efficient - higher running costs		
England & Wales	EU Directive 2002/91/EC	